

DAVIS®

# Ginkgo Plastic Price List

Designed by jehs+laub

Effective March 2, 2020

Updated March 11, 2021



## GINKGO PLASTIC Series

Specifications .....	2
Images .....	3

GKP-10 .....	4
GKP-11 .....	4
GKP-12.....	4
GKP-13.....	5
GKP-20.....	6
GKP-21.....	6
GKP-22 .....	6
GKP-23 .....	7

GK-Trolley .....	7
GKP-Trolley-S.....	7



## FEATURES

---

### Base

- Four Leg Base** - Welded tubular steel frame
  - Sled Base** - Welded steel rod frame
- 

### Glides

- All chairs standard with plastic glides
  - Optional felt glide is available **GKP-Felt** – no charge at the time of order
- 

### Shells

- Polypropylene shell in 7 colors
- 

### Stacking

- All bases and upholstery treatments stack **6** high
- 

### Upholstery

- **Seat Pad** – Seat pad
- **Seat & Back Pad** – Interior seat and back pad
- **Fully Upholstered** – Shell is fully upholstered

## BASE OPTIONS



Four Leg Base



Sled Base

---

## UPHOLSTERY OPTIONS



Seat Pad



Interior Seat & Back Insert



Fully Upholstered

---

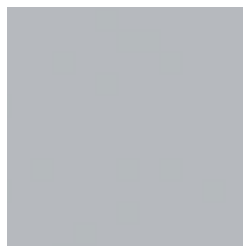
## PLASTIC COLORS



GKP-Black



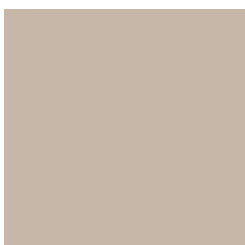
GKP-Moss



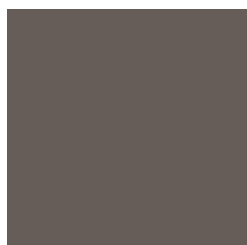
GKP-Ice



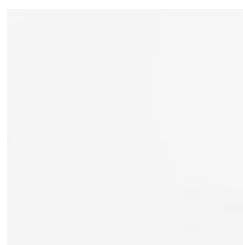
GKP-Orange



GKP-Sand





GKP-Steel




GKP-White

Example: item number **GKP-10** = GKP-10

Item	Description	Dimensions	w	inches d	h	Yardage / Square Feet	Shipping Weight
<b>GKP-10</b> 	Plastic Sled Base	Outside	22	22 <sup>5</sup> / <sub>8</sub>	32 <sup>1</sup> / <sub>4</sub>	-	24 lbs.
		Inside	21	18 <sup>1</sup> / <sub>2</sub>	15		
		Seat			18 <sup>3</sup> / <sub>8</sub>		
List Price Selection <b>477</b>							

Item	Description	Dimensions	w	inches d	h	Yardage / Square Feet	Shipping Weight
<b>GKP-11</b> 	Plastic Sled Base Seat Pad	Outside	22	22 <sup>5</sup> / <sub>8</sub>	32 <sup>1</sup> / <sub>4</sub>	1 yd. / 18 sq. ft.	24 lbs.
		Inside	21	17 <sup>3</sup> / <sub>8</sub>	14		
		Seat			19 <sup>1</sup> / <sub>4</sub>		
List Price Grades COM/COL    A    B    C    D    E    F    G    H    I    J    K    L <b>651    662    673    684    695    706    717    728    739    750    761    772    783</b>							

Item	Description	Dimensions	w	inches d	h	Yardage / Square Feet	Shipping Weight
<b>GKP-12</b> 	Plastic Sled Base Interior Seat & Back Insert	Outside	22	22 <sup>5</sup> / <sub>8</sub>	32 <sup>1</sup> / <sub>4</sub>	1 yd. / 18 sq. ft.	24 lbs.
		Inside	21	17 <sup>3</sup> / <sub>8</sub>	14		
		Seat			19 <sup>1</sup> / <sub>4</sub>		
List Price Grades COM/COL    A    B    C    D    E    F    G    H    I    J    K    L <b>827    842    857    872    887    902    917    932    947    962    977    992    1007</b>							

## Required to Specify

**Fabrics or Leather :** Ensure graded in material or COM/COL is approved for use on Ginkgo Plastic by contacting Davis.

**Metal Finish :** Chrome, Anthracite, Bronze, Ice, Matte Black, Moss, Silver, Matte Silver, Light Grey, Mid Grey, Matte White, Orange, Sand, Steel


**Plastic Shell :** GKP-Black, GKP-Ice, GKP-Moss, GKP-Orange, GKP-Sand, GKP-Steel, GKP-White

## Options *(specify only if preferred)*

**Glides: GKP-Felt** Felt Glides - for hard surface floors. **No Upcharge** *(must specify when ordering)*

Example: item number GKP-13 = GKP-13

Item	Description	Dimensions	w	inches		Yardage / Square Feet	Shipping Weight
				d	h		
GKP-13	Sled Base Fully Upholstered	Outside	22	22 <sup>5</sup> / <sub>8</sub>	32 <sup>1</sup> / <sub>4</sub>	1 <sup>1</sup> / <sub>4</sub> yds. / 22 <sup>1</sup> / <sub>2</sub> sq. ft.	25 lbs.
		Inside	21	17 <sup>3</sup> / <sub>8</sub>	14		
		Seat			19 <sup>1</sup> / <sub>4</sub>		

List Price  
Grades  
COM/COL

COM/COL	A	B	C	D	E	F	G	H	I	J	K	L
925	954	983	1012	1041	1070	1099	1128	1157	1186	1215	1244	1273

## Required to Specify


**Fabrics or Leather :** Ensure graded in material or COM/COL is approved for use on Ginkgo Plastic by contacting Davis.


**Metal Finish :** Chrome, Anthracite, Bronze, Ice, Matte Black, Moss, Silver, Matte Silver, Light Grey, Mid Grey, Matte White, Orange, Sand, Steel

## Options *(specify only if preferred)*

**Glides: GKP-Felt** Felt Glides - for hard surface floors. **No Upcharge** *(must specify when ordering)*

Example: item number **GKP-20** = GKP-20

Item	Description	Dimensions	w	inches d	h	Yardage / Square Feet	Shipping Weight
<b>GKP-20</b>	Plastic Four Leg Base	Outside Inside Seat	22 21	22 <sup>5</sup> / <sub>8</sub> 18 <sup>1</sup> / <sub>2</sub>	32 <sup>1</sup> / <sub>4</sub> 15 18 <sup>3</sup> / <sub>8</sub>	-	24 lbs.
	List Price Selection						
<b>504</b>							

Item	Description	Dimensions	w	inches d	h	Yardage / Square Feet	Shipping Weight					
<b>GKP-21</b>	Plastic Four Leg Base Seat Pad	Outside Inside Seat	22 21	22 <sup>5</sup> / <sub>8</sub> 18 <sup>1</sup> / <sub>2</sub>	32 <sup>1</sup> / <sub>4</sub> 14 19 <sup>1</sup> / <sub>4</sub>	1 yd. / 18 sq. ft.	24 lbs.					
	List Price Grades											
COM/COL	A	B	C	D	E	F	G	H	I	J	K	L
<b>678</b>	<b>689</b>	<b>700</b>	<b>711</b>	<b>722</b>	<b>733</b>	<b>744</b>	<b>755</b>	<b>766</b>	<b>777</b>	<b>788</b>	<b>799</b>	<b>810</b>

Item	Description	Dimensions	w	inches d	h	Yardage / Square Feet	Shipping Weight					
<b>GKP-22</b>	Plastic Four Leg Base Interior Seat & Back Insert	Outside Inside Seat	22 21	22 <sup>5</sup> / <sub>8</sub> 17 <sup>3</sup> / <sub>8</sub>	32 <sup>1</sup> / <sub>4</sub> 14 19 <sup>1</sup> / <sub>4</sub>	1 yd. / 18 sq. ft.	24 lbs.					
	List Price Grades											
COM/COL	A	B	C	D	E	F	G	H	I	J	K	L
<b>878</b>	<b>893</b>	<b>908</b>	<b>923</b>	<b>938</b>	<b>953</b>	<b>968</b>	<b>983</b>	<b>998</b>	<b>1013</b>	<b>1028</b>	<b>1043</b>	<b>1058</b>

## Required to Specify

**Fabrics or Leather :** Ensure graded in material or COM/COL is approved for use on Ginkgo Plastic by contacting Davis.

**Metal Finish :** Chrome, Anthracite, Bronze, Ice, Matte Black, Moss, Silver, Matte Silver, Light Grey, Mid Grey, Matte White, Orange, Sand, Steel

**Plastic Shell :** GKP-Black, GKP-Ice, GKP-Moss, GKP-Orange, GKP-Sand, GKP-Steel, GKP-White

## Options *(specify only if preferred)*

**Glides: GKP-Felt** Felt Glides - for hard surface floors. **No Upcharge** *(must specify when ordering)*

FOUR LEG BASE

# GINKGO Plastic Series

Example: item number **GKP-23** = **GKP-23**

Item	Description	Dimensions	w	inches d	h	Yardage / Square Feet	Shipping Weight
<b>GKP-23</b>	Four Leg Base Fully Upholstered	Outside Inside Seat	22 21	22 <sup>5</sup> / <sub>8</sub> 17 <sup>3</sup> / <sub>8</sub>	32 <sup>1</sup> / <sub>4</sub> 14 19 <sup>1</sup> / <sub>4</sub>	1 <sup>1</sup> / <sub>4</sub> yd. / 22 <sup>1</sup> / <sub>2</sub> sq. ft.	25 lbs.



List Price  
Grades

COM/COL	A	B	C	D	E	F	G	H	I	J	K	L
924	953	982	1011	1040	1069	1098	1127	1156	1185	1214	1243	1272

Item	Description	Dimensions	w	inches d	h	Shipping Weight
<b>GK-Trolley</b>	Trolley	Outside	22 <sup>7</sup> / <sub>8</sub>	23 <sup>3</sup> / <sub>8</sub>	7 - 10 <sup>1</sup> / <sub>4</sub>	44 lbs.



**NOTE:** use with Four Leg base only

List Price

**670** only available in textured black

Item	Description	Dimensions	w	inches d	h	Shipping Weight
<b>GKP-Trolley-S</b>	Sled Base Trolley	Outside	24 <sup>7</sup> / <sub>8</sub>	23 <sup>3</sup> / <sub>8</sub>	7 - 10 <sup>1</sup> / <sub>4</sub>	44 lbs.



**NOTE:** use with Sled base only

List Price

**670** only available in textured black

## Required to Specify

**Fabrics or Leather :** Ensure graded in material or COM/COL is approved for use on Ginkgo Plastic by contacting Davis.

**Metal Finish :** Chrome, Anthracite, Bronze, Ice, Matte Black, Moss, Silver, Matte Silver, Light Grey, Mid Grey, Matte White, Orange, Sand, Steel

## Options *(specify only if preferred)*

**Glides: GKP-Felt** Felt Glides - for hard surface floors. **No Upcharge** *(must specify when ordering)*