

DAVIS®

Q5 Price List

Designed by Jonathan Prestwich

Effective March 2, 2020

Updated March 11, 2021



Q5 Lounge Series

Specifications	2
Images	3
SEATING	
Q5-1000	4
Q5-2000	4
TABLES	
Q5-3000	5
Q5-3100	5
Q5-3200	5
Q5-3300	6
Q5-3400	6



FEATURES

Connectors

Standard with connecting tables

Frame

Multi-density foam over a plywood frame construction
Q5-2000 and Q5-3300 Lounge Stools are weighted for stability

Glides

Adjustable glides are standard

Upholstery

Contrasting welt option offered. Must specify at time of order.
Davis Fabric and Leather Program or COM/COL

SEATING UNITS



Two Seater



Lounge Stool

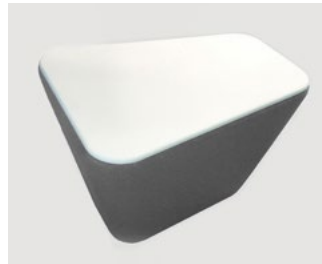
UPHOLSTERY DETAIL



TABLES



Freestanding Round Table



Freestanding Trapezoid Table



High Round Table



Connecting Table

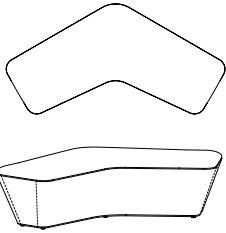


Large Round Table

Q5 Lounge Series

Example: item number **Q5-1000** = **Q5-1000**

Item	Description	Dimensions	w	inches		Yardage / Square Feet	Shipping Weight
				d	h		
Q5-1000	60° Shaped Two Seater	Outside	66 ⁵ / ₈	33 ⁵ / ₈	16 ³ / ₄	4 ¹ / ₂ yds. / 81 sq.ft.	110 lbs.



List Price
Grades

COM/COL	A	B	C	D	E	F	G	H	I	J	K	L
2983	3099	3215	3331	3447	3563	3679	3795	3911	4027	4143	4259	4375

Item	Description	Dimensions	w	inches		Yardage / Square Feet	Shipping Weight
				d	h		
Q5-2000	Lounge Stool	Outside	19	16 ⁵ / ₈	16 ³ / ₄	2 ¹ / ₄ yds. / 40 ¹ / ₂ sq. ft.	33 lbs.



List Price
Grades

COM/COL	A	B	C	D	E	F	G	H	I	J	K	L
1101	1145	1189	1233	1277	1321	1365	1409	1453	1497	1541	1585	1629


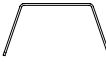
Required to Specify

Fabrics or Leather : Ensure graded in material or COM/COL is approved for use on Q5 by contacting Davis

Q5 Lounge Series

Example: item number **Q5-3000** + wood suffix **-OA** = **Q5-3000-OA**

Item	Description	Dimensions	w	inches d	h
Q5-3000	Connecting Table	Outside	19 1/2	15 3/4	14 3/16


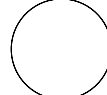



Cannot be freestanding or used as an end table.

List Price

-OA Oak	-WW Walnut
816	909


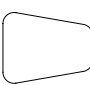
Item	Description	Dimensions	inches dia	h	Yardage / Square Feet	Shipping Weight
Q5-3100	Round Table Freestanding	Outside	27 3/4	15 1/4	1 1/2 yds. / 27 sq. ft.	54 lbs. Acrylic 44 lbs. Veneer

List Price
Grades

COM/COL	A	B	C	D	E	F	G	H	I	J	K	L	
-OA Oak	1272	1309	1346	1383	1420	1457	1494	1531	1568	1605	1642	1679	1716
-WW Walnut	1272	1309	1346	1383	1420	1457	1494	1531	1568	1605	1642	1679	1716
-AY Acrylic	1442	1479	1516	1553	1590	1627	1664	1701	1738	1775	1812	1849	1886

Item	Description	Dimensions	w	inches d	h	Yardage / Square Feet	Shipping Weight
Q5-3200	Trapezoid Table Freestanding	Outside	23	18 1/4	15 1/4	1 1/2 yds. / 27 sq. ft.	33 lbs. Acrylic 27 lbs. Veneer

List Price
Grades

COM/COL	A	B	C	D	E	F	G	H	I	J	K	L	
-OA Oak	1006	1043	1080	1117	1154	1191	1228	1265	1302	1339	1376	1413	1450
-WW Walnut	1006	1043	1080	1117	1154	1191	1228	1265	1302	1339	1376	1413	1450
-AY Acrylic	1052	1089	1126	1163	1200	1237	1274	1311	1348	1385	1422	1459	1496

Required to Specify

Fabrics or Leather : Ensure graded in material or COM/COL is approved for use on Q5 by contacting Davis - *only for Q5-3100 and Q5-3200*

Top Finishes :	Oak	-OA	301 Natural Oak	Walnut	-WW	400 Light Walnut	Acrylic	-AY	White
			302 Medium Oak			401 Natural Walnut			
			303 Grey Oak			402 Medium Walnut			
			304 Brown Oak						

Q5 Lounge Series

Example: item number **Q5-3300** + wood suffix **-OA** = **Q5-3300-OA**

Item	Description	Dimensions	inches dia	h	Yardage / Square Feet	Shipping Weight
Q5-3300	High Round Table Freestanding	Outside	20	22 1/2	1 3/4 yds. / 31 1/2 sq. ft.	35 lbs. Acrylic 30 lbs. Veneer

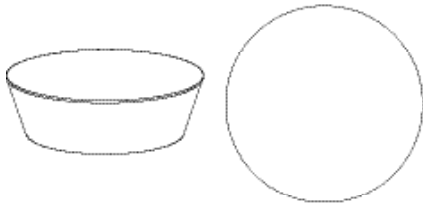


List Price

Grades

	COM/COL	A	B	C	D	E	F	G	H	I	J	K	L
-OA Oak	1302	1353	1404	1455	1506	1557	1608	1659	1710	1761	1812	1863	1914
-WW Walnut	1302	1353	1404	1455	1506	1557	1608	1659	1710	1761	1812	1863	1914
-AY Acrylic	1395	1446	1497	1548	1599	1650	1701	1752	1803	1854	1905	1956	2007

Item	Description	Dimensions	inches dia	h	Yardage / Square Feet	Shipping Weight
Q5-3400	LARGE Round Table Freestanding	Outside	48 1/4	15 1/4	2 1/2 yds. / 45 sq. ft.	126 lbs. Acrylic 96 lbs. Veneer



List Price

Grades

	COM/COL	A	B	C	D	E	F	G	H	I	J	K	L
-OA Oak	2787	2860	2933	3006	3079	3152	3225	3298	3371	3444	3517	3590	3663
-WW Walnut	2787	2860	2933	3006	3079	3152	3225	3298	3371	3444	3517	3590	3663
-AY Acrylic	3226	3299	3372	3445	3518	3591	3664	3737	3810	3883	3956	4029	4102

Required to Specify

Fabrics or Leather : Ensure graded in material or COM/COL is approved for use on Q5 by contacting Davis

Top Finishes :	Oak	-OA	301 Natural Oak	Walnut	-WW	400 Light Walnut	Acrylic	-AY	White
			302 Medium Oak			401 Natural Walnut			
			303 Grey Oak			402 Medium Walnut			
			304 Brown Oak						