

DAVIS®

Codi Price List

Designed by Archirivolto

Effective June 12, 2017

Updated September 7, 2017



CODI Chair Series

Specifications	2
Images	3
PLASTIC SHELL	
CD-1010	4
CD-1510	4
CD-1020	5
CD-1520	5
CD-1030	6
CD-1530	6
BARSTOOLS	
CD-2010	7
CD-2020	7
FELT SHELL	
CD-3510	8
CD-3520	8
CD-3530	9

For information concerning Condition of Sales, Warranty, Fabric, Finishes, etc., please download the *Conditions of Sales.pdf* on the Davis web site: www.davisfurniture.com

FEATURES

Frame

- **Four-leg Base** – Unified steel frame
 - **Sled Base** – Unified steel frame
 - **Bent Plywood Base** – Beech and Oak finishes
 - **Barstool** – Sled or Four-Leg unified steel frame
-

Glides

All bases come standard with plastic glides. Optional felt glide **CD-Felt** is available

Shell

Plastic - Polypropylene shell

Felt - 100% Polyester molded fleece

Stacking

Armless plastic shell, four-leg steel base can stack **4** high - *optional seat cushion must be removed to stack*

Both sled and four-leg base barstools can stack **5** high - *optional seat cushion must be removed to stack*

Upholstery

Removable Seat Pad – seat pad is removable with non-slip fabric underneath

SEAT OPTIONS



Armless / Plastic



Arm / Plastic



Arm / Felt



UPHOLSTERED SEAT PAD

BASE OPTIONS



Four-Leg



Sled



Wood

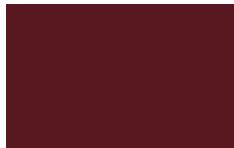


Barstool

PLASTIC COLORS



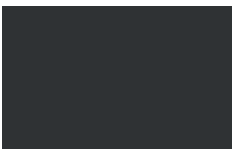
Aqua



Black Cherry



Fog



Lava



Canary

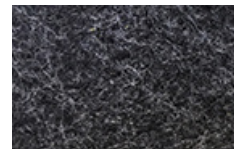


Lime

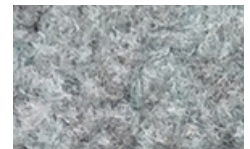


Stone

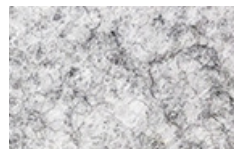
FELT COLORS



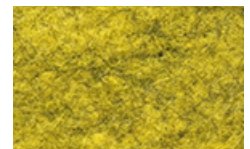
Dark Grey



Frost



Light Grey



Yellow

Example: item number CD-1010 + metal suffix -CH = CD-1010-CH

Item	Description	Dimensions	w	inches d	h	Yardage / Square Feet	Shipping Weight
CD-1010	Plastic Shell Four-Leg Base Armless	Outside Inside Seat	22 18	20 ³ / ₄ 18 ¹ / ₄	31 ⁷ / ₈ 14 ¹ / ₂ 18 ¹ / ₈	³ / ₄ yd. / 13 ¹ / ₂ sq. ft.- Uph. Seat	17 lbs.



List Price

-CH Chrome	596
-PC Powder Coat	596

OPTION	Grades												
	COM/COL	A	B	C	D	E	F	G	H	I	J	K	L
CD-UPHS	139	150	161	172	183	194	205	216	227	238	249	260	271

Upholstered Seat

Item	Description	Dimensions	w	inches d	h	Yardage / Square Feet	Shipping Weight
CD-1510	Plastic Shell Four-Leg Base Arm	Outside Inside Arm Seat	23 ¹ / ₄ 17	23 ¹ / ₄ 18 ¹ / ₂	32 ⁵ / ₈ 14 ¹ / ₂ 28 ¹ / ₈ 18 ¹ / ₈	³ / ₄ yd. / 13 ¹ / ₂ sq. ft.- Uph. Seat	22 lbs.



List Price

-CH Chrome	620
-PC Powder Coat	625

OPTION	Grades												
	COM/COL	A	B	C	D	E	F	G	H	I	J	K	L
CD-UPHS	139	150	161	172	183	194	205	216	227	238	249	260	271

Upholstered Seat

Required to Specify

Fabrics or Leather : Ensure graded in material or COM/COL is approved for use on Codi by contacting Davis

Metal Finish : Chrome, Anthracite, Bronze, Matte Black, Silver, Matte Silver, Light Grey, Mid Grey, Matte White, Aqua, Black Cherry, Canary, Fog, Lime, or Stone

Plastic Shell Finishes :	CD-Aqua	CD-Lava
	CD-Black Cherry	CD-Lime
	CD-Canary	CD-Stone
	CD-Fog	

Options *(specify only if preferred)*

Glides: **CD-Felt** Felt Glides - **No Upcharge** *(must specify when ordering)*

Example: item number CD-1020 + metal suffix -CH = CD-1020-CH

Item	Description	Dimensions	w	inches d	h	Yardage / Square Feet	Shipping Weight
CD-1020	Plastic Shell	Outside	20 1/2	23 5/8	32 1/4	3/4 yd. / 13 1/2 sq. ft.- Uph. Seat	20 lbs.
	Sled Base	Inside	18	18 1/2	14 1/2		
	Armless	Seat			18 1/8		



List Price

-CH Chrome **548**

-PC Powder Coat **556**

OPTION	Grades COM/COL	A	B	C	D	E	F	G	H	I	J	K	L
		CD-UPHS	139	150	161	172	183	194	205	216	227	238	249

Upholstered Seat

Item	Description	Dimensions	w	inches d	h	Yardage / Square Feet	Shipping Weight
CD-1520	Plastic Shell	Outside	23 1/4	23 1/4	32 5/8	3/4 yd. / 13 1/2 sq. ft.- Uph. Seat	25 lbs.
	Sled Base	Inside	17	18 1/2	14 1/2		
	Arm	Arm			28 1/8		
		Seat			18 1/8		



List Price

-CH Chrome **579**

-PC Powder Coat **585**

OPTION	Grades COM/COL	A	B	C	D	E	F	G	H	I	J	K	L
		CD-UPHS	139	150	161	172	183	194	205	216	227	238	249

Upholstered Seat

Required to Specify

Fabrics or Leather : Ensure graded in material or COM/COL is approved for use on Codi by contacting Davis

Metal Finish : Chrome, Anthracite, Bronze, Matte Black, Silver, Matte Silver, Light Grey, Mid Grey, Matte White, Aqua, Black Cherry, Canary, Fog, Lime, or Stone

Plastic Shell Finishes :

CD-Aqua	CD-Lava
CD-Black Cherry	CD-Lime
CD-Canary	CD-Stone
CD-Fog	

Options *(specify only if preferred)*

Glides: CD-Felt Felt Glides - **No Upcharge** *(must specify when ordering)*

Example: item number CD-1030 + wood suffix -OA = CD-1013-OA

Item	Description	Dimensions	w	inches d	h	Yardage / Square Feet	Shipping Weight
CD-1030	Plastic Shell Wood Base Armless	Outside	19 ⁵ / ₈	22 ⁷ / ₈	32 ¹ / ₄	³ / ₄ yd. / 13 ¹ / ₂ sq. ft.- Uph. Seat	17 lbs.
		Inside	18	18 ¹ / ₂	14 ¹ / ₂		
		Seat			18 ¹ / ₈		



List Price

-BB Beech	795
-OA Oak	925

OPTION	Grades COM/COL	A	B	C	D	E	F	G	H	I	J	K	L
		CD-UPHS	139	150	161	172	183	194	205	216	227	238	249

Upholstered Seat

Item	Description	Dimensions	w	inches d	h	Yardage / Square Feet	Shipping Weight
CD-1530	Plastic Shell Wood Base Arm	Outside	23 ¹ / ₄	23 ¹ / ₄	32 ⁵ / ₈	³ / ₄ yd. / 13 ¹ / ₂ sq. ft.- Uph. Seat	22 lbs.
		Inside	17	18 ¹ / ₂	14 ¹ / ₂		
		Arm			28 ¹ / ₈		
		Seat			18 ¹ / ₈		



List Price

-BB Beech	822
-OA Oak	952

OPTION	Grades COM/COL	A	B	C	D	E	F	G	H	I	J	K	L
		CD-UPHS	139	150	161	172	183	194	205	216	227	238	249

Upholstered Seat

Required to Specify

Fabrics or Leather : Ensure graded in material or COM/COL is approved for use on Codi by contacting Davis

Leg Finishes:	Beech	-BB	101 Natural Beech	Oak	-OA	301 Natural Oak
			102 Light Beech			302 Medium Oak
			103 Medium Beech			303 Grey Oak
			104 Dark Beech			304 Brown Oak
			105 Black Beech			

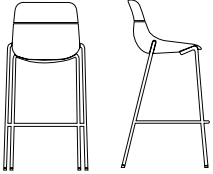
Plastic Shell Finishes :	CD-Aqua	CD-Lava
	CD-Black Cherry	CD-Lime
	CD-Canary	CD-Stone
	CD-Fog	

Options *(specify only if preferred)*

Glides: CD-Felt Felt Glides - **No Upcharge** *(must specify when ordering)*

Example: item number **CD-2010** + metal suffix **-CH** = **CD-2010-CH**

Item	Description	Dimensions	w	inches d	h	Yardage / Square Feet	Shipping Weight
CD-2010	Plastic Shell Four-leg Barstool Armless	Outside Inside Seat	21 1/4 16 3/4	21 7/8 16 1/2	42 1/2 12 1/2 30 5/8	3/4 yd. / 13 1/2 sq. ft.- Uph. Seat	19 lbs.



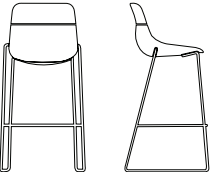
List Price

-CH Chrome	775
-PC Powder Coat	714

OPTION	Grades COM/COL	Grades											
		A	B	C	D	E	F	G	H	I	J	K	L
CD-UPHS	139	150	161	172	183	194	205	216	227	238	249	260	271

Upholstered Seat

Item	Description	Dimensions	w	inches d	h	Yardage / Square Feet	Shipping Weight
CD-2020	Plastic Shell Sled Barstool Armless	Outside Inside Seat	21 16 3/4	21 1/4 16 1/2	42 1/2 12 1/2 30 5/8	3/4 yd. / 13 1/2 sq. ft.- Uph. Seat	19 lbs.



List Price

-CH Chrome	832
-PC Powder Coat	765

OPTION	Grades COM/COL	Grades											
		A	B	C	D	E	F	G	H	I	J	K	L
CD-UPHS	139	150	161	172	183	194	205	216	227	238	249	260	271

Upholstered Seat

Required to Specify

Fabrics or Leather : Ensure graded in material or COM/COL is approved for use on Codi by contacting Davis

Metal Finish : Chrome, Anthracite, Bronze, Matte Black, Silver, Matte Silver, Light Grey, Mid Grey, Matte White, Aqua, Black Cherry, Canary, Fog, Lime, or Stone

Plastic Shell Finishes :	CD-Aqua	CD-Lava
	CD-Black Cherry	CD-Lime
	CD-Canary	CD-Stone
	CD-Fog	

Options *(specify only if preferred)*

Glides: **CD-Felt** Felt Glides - **No Upcharge** *(must specify when ordering)*

Example: item number CD-3510 + metal suffix -CH = CD-3510-CH

Item	Description	Dimensions	w	inches d	h	Yardage / Square Feet	Shipping Weight
CD-3510	Felt Shell Four-Leg Base Arm	Outside Inside Seat	25 15 1/4	21 1/2 18 1/2	31 12 3/4 18 1/2	3/4 yd. / 13 1/2 sq. ft.- Uph. Seat	22 lbs.



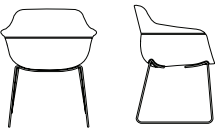
List Price

-CH Chrome	832
-PC Powder Coat	846

OPTION	Grades												
	COM/COL	A	B	C	D	E	F	G	H	I	J	K	L
CD-UPHS	139	150	161	172	183	194	205	216	227	238	249	260	271

Upholstered Seat

Item	Description	Dimensions	w	inches d	h	Yardage / Square Feet	Shipping Weight
CD-3520	Felt Shell Sled Base Arm	Outside Inside Arm Seat	25 15 1/4	21 1/2 18 1/2	31 12 3/4 28 1/2 18 1/2	3/4 yd. / 13 1/2 sq. ft.- Uph. Seat	25 lbs.



List Price

-CH Chrome	790
-PC Powder Coat	795

OPTION	Grades												
	COM/COL	A	B	C	D	E	F	G	H	I	J	K	L
CD-UPHS	139	150	161	172	183	194	205	216	227	238	249	260	271

Upholstered Seat

Required to Specify

Fabrics or Leather : Ensure graded in material or COM/COL is approved for use on Codi by contacting Davis

Metal Finish : Chrome, Anthracite, Bronze, Matte Black, Silver, Matte Silver, Light Grey, Mid Grey, or Matte White

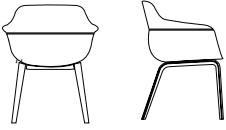
Felt Shell : Frost, Light Grey, Dark Grey or Yellow

Options *(specify only if preferred)*

Glides: CD-Felt Felt Glides - **No Upcharge** *(must specify when ordering)*

Example: item number CD-3530 + wood suffix -OA = CD-3530-OA

Item	Description	Dimensions	w	inches d	h	Yardage / Square Feet	Shipping Weight
CD-3530	Felt Shell	Outside	25	21 1/2	31 3/8	3/4 yd. / 13 1/2 sq. ft.- Uph. Seat	22 lbs.
	Wood Base	Inside	17	18 1/2	14 1/2		
	Arm	Arm			27 3/4		
		Seat			17 3/4		



List Price

-BB Beech	1069
-OA Oak	1198

OPTION	Grades												
	COM/COL	A	B	C	D	E	F	G	H	I	J	K	L
CD-UPHS Upholstered Seat	139	150	161	172	183	194	205	216	227	238	249	260	271

Required to Specify

Fabrics or Leather : Ensure graded in material or COM/COL is approved for use on Codi by contacting Davis

Leg Finishes:	Beech	-BB	101 Natural Beech	Oak	-OA	301 Natural Oak
			102 Light Beech			302 Medium Oak
			103 Medium Beech			303 Grey Oak
			104 Dark Beech			304 Brown Oak
			105 Black Beech			

Metal Finish : Chrome, Anthracite, Bronze, Matte Black, Silver, Matte Silver, Light Grey, Mid Grey, or Matte White

Felt Shell : Frost, Light Grey, Dark Grey or Yellow

Options *(specify only if preferred)*

Glides: CD-Felt Felt Glides - **No Upcharge** *(must specify when ordering)*