

DAVIS®

Q5 Price List

Designed by Jonathan Prestwich
Effective March 15, 2017



Q5 Lounge Series

Specifications	2
Images	3
SEATING	
Q5-1000	4
Q5-2000	4
TABLES	
Q5-3000	5
Q5-3100	5
Q5-3200	5
Q5-3300	6
Q5-3400	6

For information concerning Condition of Sales, Warranty, Fabric, Finishes, etc., please download the *Conditions of Sales.pdf* on the Davis web site: www.davisfurniture.com

FEATURES

Connectors

Standard with connecting tables

Frame

Multi-density foam over a plywood frame construction
Q5-2000 and Q5-3300 Lounge Stools are weighted for stability

Glides

Adjustable glides are standard

Upholstery

Contrasting welt option offered. Must specify at time of order.
Davis Fabric and Leather Program or COM/COL



SEATING UNITS



Two Seater



Lounge Stool

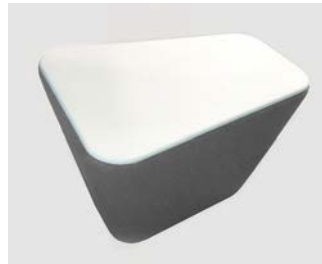
UPHOLSTERY DETAIL



TABLES



Freestanding Round Table



Freestanding Trapezoid Table



High Round Table



Connecting Table

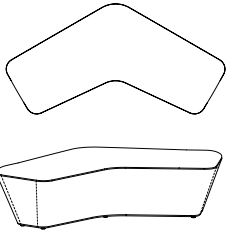


Large Round Table

Q5 Lounge Series

Example: item number **Q5-1000** = **Q5-1000**

Item	Description	Dimensions	w	inches		Yardage / Square Feet	Shipping Weight
				d	h		
Q5-1000	60° Shaped Two Seater	Outside	66 ⁵ / ₈	33 ⁵ / ₈	16 ³ / ₄	4 yds. / 72 sq.ft.	110 lbs.



List Price
Grades

COM/COL	A	B	C	D	E	F	G	H	I	J	K	L
2577	2693	2809	2925	3041	3157	3273	3389	3505	3621	3737	3853	3969

Item	Description	Dimensions	w	inches		Yardage / Square Feet	Shipping Weight
				d	h		
Q5-2000	Lounge Stool	Outside	19	16 ⁵ / ₈	16 ³ / ₄	1 1/2 yds. / 27 sq. ft.	33 lbs.



List Price
Grades

COM/COL	A	B	C	D	E	F	G	H	I	J	K	L
951	995	1039	1083	1127	1171	1215	1259	1303	1347	1391	1435	1479


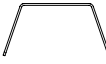
Required to Specify

Fabrics or Leather : Ensure graded in material or COM/COL is approved for use on Q5 by contacting Davis

Q5 Lounge Series

Example: item number **Q5-3000** + wood suffix **-OA** = **Q5-3000-OA**

Item	Description	Dimensions	w	inches d	h
Q5-3000	Connecting Table	Outside	19 1/2	15 3/4	14 3/16


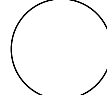



Cannot be freestanding or used as an end table.

List Price

-OA Oak	-WW Walnut
705	786


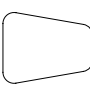
Item	Description	Dimensions	inches dia	h	Yardage / Square Feet	Shipping Weight
Q5-3100	Round Table Freestanding	Outside	27 3/4	15 1/4	1 1/4 yds. / 22 1/2 sq. ft.	54 lbs. Acrylic 44 lbs. Veneer

List Price
Grades

	COM/COL	A	B	C	D	E	F	G	H	I	J	K	L
-OA Oak	1098	1135	1172	1209	1246	1283	1320	1357	1394	1431	1468	1505	1542
-WW Walnut	1098	1135	1172	1209	1246	1283	1320	1357	1394	1431	1468	1505	1542
-AY Acrylic	1246	1283	1320	1357	1394	1431	1468	1505	1542	1579	1616	1653	1690

Item	Description	Dimensions	w	inches d	h	Yardage / Square Feet	Shipping Weight
Q5-3200	Trapezoid Table Freestanding	Outside	23	18 1/4	15 1/4	1 1/4 yds. / 22 1/2 sq. ft.	33 lbs. Acrylic 27 lbs. Veneer

List Price
Grades

	COM/COL	A	B	C	D	E	F	G	H	I	J	K	L
-OA Oak	869	906	943	980	1017	1054	1091	1128	1165	1202	1239	1276	1313
-WW Walnut	869	906	943	980	1017	1054	1091	1128	1165	1202	1239	1276	1313
-AY Acrylic	909	946	983	1020	1057	1094	1131	1168	1205	1242	1279	1316	1353

Required to Specify

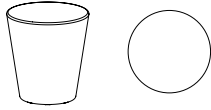
Fabrics or Leather : Ensure graded in material or COM/COL is approved for use on Q5 by contacting Davis - *only for Q5-3100 and Q5-3200*

Top Finishes :	Oak	-OA	301 Natural Oak	Walnut	-WW	400 Light Walnut	Acrylic	-AY	White
			302 Medium Oak			401 Natural Walnut			
			303 Grey Oak			402 Medium Walnut			
			304 Brown Oak						

Q5 Lounge Series

Example: item number **Q5-3300** + wood suffix **-OA** = **Q5-3300-OA**

Item	Description	Dimensions	inches dia	h	Yardage / Square Feet	Shipping Weight
Q5-3300	High Round Table Freestanding	Outside	20	22 1/2	1 3/4 yds. / 31 1/2 sq. ft.	35 lbs. Acrylic 30 lbs. Veneer

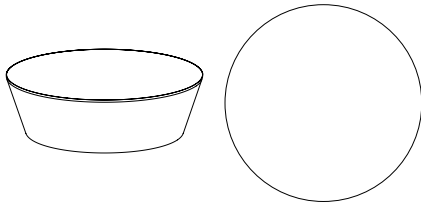


List Price

Grades

	COM/COL	A	B	C	D	E	F	G	H	I	J	K	L
-OA Oak	1125	1176	1227	1278	1329	1380	1431	1482	1533	1584	1635	1686	1737
-WW Walnut	1125	1176	1227	1278	1329	1380	1431	1482	1533	1584	1635	1686	1737
-AY Acrylic	1206	1257	1308	1359	1410	1461	1512	1563	1614	1665	1716	1767	1818

Item	Description	Dimensions	inches dia	h	Yardage / Square Feet	Shipping Weight
Q5-3400	LARGE Round Table Freestanding	Outside	48 1/4	15 1/4	2 1/2 yds. / 45 sq. ft.	126 lbs. Acrylic 96 lbs. Veneer



List Price

Grades

	COM/COL	A	B	C	D	E	F	G	H	I	J	K	L
-OA Oak	2408	2481	2554	2627	2700	2773	2846	2919	2992	3065	3138	3211	3284
-WW Walnut	2408	2481	2554	2627	2700	2773	2846	2919	2992	3065	3138	3211	3284
-AY Acrylic	2787	2860	2933	3006	3079	3152	3225	3298	3371	3444	3517	3590	3663

Required to Specify

Fabrics or Leather : Ensure graded in material or COM/COL is approved for use on Q5 by contacting Davis

Top Finishes :	Oak	-OA	301 Natural Oak	Walnut	-WW	400 Light Walnut	Acrylic	-AY	White
			302 Medium Oak			401 Natural Walnut			
			303 Grey Oak			402 Medium Walnut			
			304 Brown Oak						